

Crane

35M.ton Crane Load
39.62m(130') Boom
33.53m(110') Boom+12.19m(40') Jib

● GENERAL DATA

BOOM: Tubular high strength steel chords, lattice construction.

Basic length, open throat and pin connected in two equal sections 9.14 m (30')

With four offset boom point sheaves on anti-friction bearings, bottom dia. 451 mm (17.76")

12 part boom hoist reeving standard.

BOOM INSERT (Optional): Insert length.....3.05 m (10'),
 6.10 m (20'),
 9.14 m (30'),
 Maximum boom length..... 39.62 m (130')

HOOK BLOCK: Three sheaves with swivel hook and 7 part hoist line, standard 35 metric tons
 15 metric tons single sheave with swivel hook for 1-3 part hoist line, optional.

JIB (Optional): Tubular lattice carbon steel construction, basic length, pin connected in two sections..... 6.10 m (20')
 open throat with one boom point sheave.

JIB INSERT (Optional): Insert length 3.05 m (10')
 Maximum jib length 12.19 m (40')

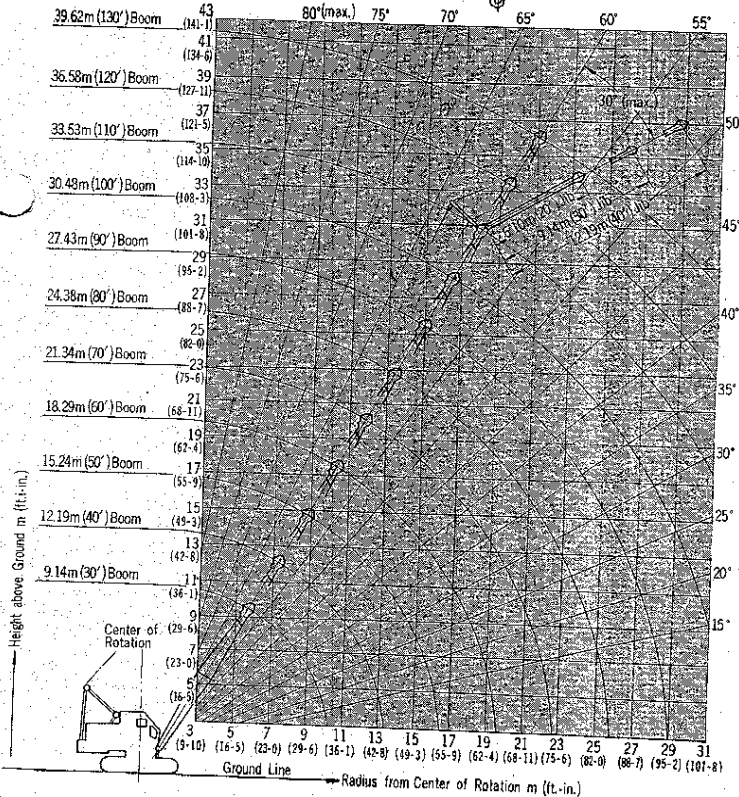
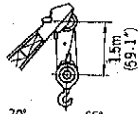
POWER CONTROLLED LOAD LOWERING: Planetary device for lowering load under power (left hand grooved drum), Standard for Crane use (Main hoist only).

GANTRY: High gantry folding type.

WORKING WEIGHT: (Including block)..... 34,400 kg (75,800 lbs.)

[10,800 kg (23,800 lbs.) counterweight included in weight, furnished as standard.]

WORKING RANGES



DRUM SHAFT ASSEMBLY

Lifting Crane Drums (P.D.)	Cable Dia.	Max. Cable Capacity	Line Pulls	Line Speeds
L.H. 400 mm (17.32")	20 mm (0.79")	130 m (425')	7,450 kg (16,400 lbs.)	48 m/min (157 fpm)
R.H. 400 mm (17.32")	20 mm (0.79")	130 m (425')	7,450 kg (16,400 lbs.)	48 m/min (157 fpm)

* Line Pulls and Line Speeds based on single part line in normal operating gear, to fit job requirements, line pull and line speed can be varied by shifting into another gear.
 ** L. H. grooved drum (crane with power lowering); R. H. grooved drum.

GROUND PRESSURES

Shoe Width	90 mm (3.5")	60 mm (2.4")
kg/cm ² (lbs. per sq.in.)	0.68 (9.7)	0.55 (7.8)

● LIFTING CAPACITIES

RATED CRANE LOADS IN KG (LBS.)—MAIN BOOM IN 360° WORK AREA WITH CRAWLER FULLY EXTENDED

Operating Radius in Meters (ft. in.)	9.14 m (30') Boom			12.19 m (40') Boom			15.24 m (50') Boom			18.29 m (60') Boom			21.34 m (70') Boom			24.38 m (80') Boom	
	Angle (°)	Boom Pt. El. (m)	Rating (kg)	Angle (°)	Boom Pt. El. (m)	Rating (kg)	Angle (°)	Boom Pt. El. (m)	Rating (kg)	Angle (°)	Boom Pt. El. (m)	Rating (kg)	Angle (°)	Boom Pt. El. (m)	Rating (kg)	Angle (°)	Boom Pt. El. (m)
3.0 (9.8)	78	10.4 (34.0)	35,000 (77,000)														
3.7 (10.8)	76	10.3 (33.1)	35,000 (77,000)														
3.9 (11.6)	74	10.2 (33.7)	31,750 (70,000)	78	13.4 (43.1)	31,660 (69,800)											
4.0 (13.1)	71	10.1 (33.1)	25,820 (56,920)	76	13.3 (43.6)	25,730 (56,720)	79	16.4 (53.9)	25,640 (56,530)								
4.5 (14.3)	68	9.9 (32.6)	21,380 (47,130)	74	13.1 (43.1)	21,290 (46,940)	77	16.3 (53.5)	21,200 (46,740)	79	19.4 (63.8)	21,110 (46,540)					
5.0 (16.5)	64	9.7 (31.9)	18,230 (40,190)	71	13.0 (42.7)	18,140 (39,990)	75	16.2 (53.0)	18,050 (39,790)	78	19.3 (63.4)	17,960 (39,590)	79	22.4 (73.6)	17,870 (39,400)		
6.0 (19.8)	57	9.1 (29.1)	14,050 (30,970)	66	12.6 (41.3)	13,960 (30,780)	71	15.8 (52.0)	13,870 (30,580)	74	19.0 (62.6)	13,780 (30,380)	77	22.2 (72.1)	13,690 (30,180)	78	25.3 (83.1)
7.0 (23.0)	49	8.4 (27.5)	11,400 (25,130)	61	12.1 (39.7)	11,310 (24,930)	67	15.5 (50.9)	11,220 (24,740)	71	18.7 (61.5)	11,130 (24,540)	74	21.9 (71.1)	11,040 (24,340)	76	25.1 (82.4)
8.0 (26.3)	40	7.3 (24.1)	9,540 (21,030)	55	11.4 (37.6)	9,450 (20,830)	63	15.0 (49.2)	9,360 (20,640)	68	18.3 (60.2)	9,270 (20,440)	71	21.6 (70.1)	9,180 (20,240)	74	24.8 (81.5)
9.0 (29.5)	29	5.9 (19.3)	8,160 (17,990)	49	10.7 (34.1)	8,070 (17,790)	59	14.4 (47.4)	7,980 (17,590)	64	17.9 (58.9)	7,890 (17,390)	68	21.2 (69.8)	7,800 (17,200)	71	24.5 (80.4)
10.0 (32.1)				43	9.7 (31.9)	7,030 (15,500)	54	13.7 (45.1)	6,940 (15,300)	61	17.4 (57.0)	6,850 (15,100)	65	20.8 (68.3)	6,760 (14,900)	69	24.1 (79.1)
12.0 (39.4)				26	6.7 (22.0)	5,560 (12,260)	44	12.0 (39.4)	5,470 (12,060)	53	16.1 (52.8)	5,380 (11,860)	59	19.7 (64.9)	5,290 (11,660)	63	23.2 (76.1)
14.0 (45.9)							32	9.4 (30.1)	4,470 (9,850)	45	14.3 (46.1)	4,380 (9,660)	53	18.4 (60.3)	4,290 (9,460)	58	22.1 (72.5)
16.0 (52.5)										35	11.9 (39.1)	3,660 (8,070)	46	16.6 (54.6)	3,570 (7,870)	52	20.7 (67.1)
18.0 (59.1)													37	14.3 (47.1)	3,010 (6,640)	46	18.9 (62.1)
20.0 (65.7)													27	11.1 (36.7)	2,590 (5,710)	39	16.7 (54.1)
25.0 (82.0)																	
30.0 (98.5)																	

- Operating radius is the horizontal distance from centerline of rotation to a vertical line through the centerline of gravity of the load.
- Ratings shown are only for combination of KOBE manufactured upper, crawler, boom, jib and counterweights.
- Ratings shown do not exceed 75% of tipping load. Deduct weight of hook, block(s), slings and all other load handling accessories from the main boom or jib rating shown.
- Boom backstops are required for all boom length. Boom inserts must be arranged as shown in the "Owner and Operator's Manual."
- Gantry must be in raised position for all "Crawler extended" ratings.
- When boom is equipped with jib, main hook ratings must be reduced by 700 kg (1,540 lbs.) for 6.10 m (20') jib or 9.14 m (30') jib and 900 kg (1,980 lbs.) for 12.19 m (40') jib.
- Ratings shown are based on freely suspended loads and make no allowance for such factors as wind effect on lifted load, ground conditions, out-of-level, operating speeds or any other condition that could be detrimental to the safe operation of this equipment. The operator, therefore, has the responsibility to judge the existing conditions and reduce lifted loads and operating speeds accordingly.
- Crawler frames must be fully extended for all crane operations.

